



RIVKLE[®] plus

Assortment box of blind rivet nuts
for thin-walled components

BOLLHOFF

Böllhoff Repair Solutions



Two functions:
riveting and screwing

Creating threads?

RIVKLE® blind rivet nuts create internal threads on thin-walled components.

Benefits

- Load-bearing threads on thin-walled components
- Assembly with access from only one side ("blind"), even on hollow profiles
- Easy fixing in components of metal, plastic and other materials
- Screws can be inserted multiple times
- No rework necessary, even on pre-painted parts
- Small countersunk head: small upstand on the head (no need to countersink the workpiece)

For hollow sections, profiles, housings and other parts that permit access from only one side, the insertion of a blind rivet nut is often the only solution available.

Read on and be inspired.



RIVKLE® plus assortment box with RIVKLE® BRK 01 manual rivet setting tool

- Contents:
- 50 of each blind rivet nut
 - 1 RIVKLE® BRK 01 manual rivet setting tool
 - 4 mandrels and nozzles for M 3, M 4, M 5, M 6
 - Operating Instructions

Size/type	Art. no.	Total number of pieces	Total number of RIVKLE® plus blind rivet nuts	Price in €
M 3 – M 6 / small countersunk, steel	2351 190 0501/00	209	200	on request
M 4 – M 6 / flat head, steel	2351 190 0502/00	159	150	on request



NEW!

RIVKLE® plus assortment box with manual rivet setting tool RIVKLE® M2007

- Contents:
- 50 each M 6 blind rivet nuts
 - 25 each M 8 blind rivet nuts
 - 25 each M 10 blind rivet nuts
 - 1 RIVKLE® M2007 manual rivet setting tool
 - 3 mandrels and nozzles for M 6, M 8, M 10
 - Operating Instructions

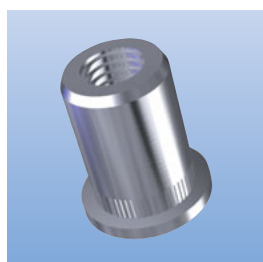
Size/type	Art. no.	Total number of pieces	Total number of RIVKLE® plus blind rivet nuts	Price in €
M 6 – M 10 / small countersunk, steel	2353 020 1001/00	107	100	on request
M 6 – M 10 / flat head, steel	2353 020 1002/00	107	100	on request

RIVKLE® plus blind rivet nuts – Refill packs



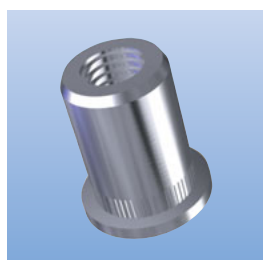
RIVKLE® plus blind rivet nuts of steel or stainless steel

Contents:
100 of each blind rivet nut



Flat head, steel

Size	Art. no.	Number of RIVKLE® plus blind rivet nuts	Price in €
M 4*	2330 704 0230/51	100	on request
M 5*	2330 705 0230/51	100	on request
M 6*	2330 706 0230/51	100	on request
M 8**	2330 708 0230/01	100	on request
M 10**	2330 710 0235/01	100	on request



Flat head, stainless steel

Size	Art. no.	Number of RIVKLE® plus blind rivet nuts	Price in €
M 4*	2330 604 0230/01	100	on request
M 5*	2330 605 0233/01	100	on request
M 6*	2330 606 0233/01	100	on request
M 8*	2330 608 0233/01	100	on request



Extra small countersunk head, steel

Size	Art. no.	Number of RIVKLE® plus blind rivet nuts	Price in €
M 3*	3436 703 0020/01	100	on request
M 4*	3436 704 0230/51	100	on request
M 5*	3436 705 0230/51	100	on request
M 6*	3436 706 0230/51	100	on request
M 8*	3436 708 0230/51	100	on request
M 10**	3436 710 0235/01	100	on request

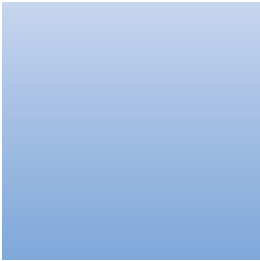


Extra small countersunk head, stainless steel

Size	Art. no.	Number of RIVKLE® plus blind rivet nuts	Price in €
M 4*	3436 604 0230/01	100	on request
M 5*	3436 605 0233/01	100	on request
M 6*	3436 606 0233/01	100	on request
M 8*	3436 608 0233/01	100	on request

*Packaging: bag

**Packaging: carton

RIVKLE® plus blind rivet nuts – Tools

RIVKLE® BRK 01 manual rivet setting tool

Contents:

Tool, exchange units M 3 – M 6

Method of operation:

Spinning the RIVKLE® plus blind rivet nut on and off, using a knurled nut.

Compression by leverage in the manual riveting tool.

Description	Size	Art. no.	Price in €
Basic tool RIVKLE® BRK 01	–	2351 190 0000/00	on request
Exchange unit*	M 3	2351 190 3001/00	on request
Exchange unit*	M 4	2351 190 4001/00	on request
Exchange unit*	M 5	2351 190 5001/00	on request
Exchange unit*	M 6	2351 190 6001/00	on request

*An exchange unit includes a nozzle and a mandrel


NEW!
RIVKLE® M2007 manual rivet setting tool

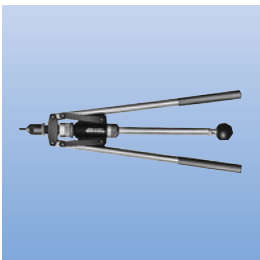
Contents:

Tool, mandrels and nozzles for sizes M 5 to M 12

Method of operation:

Spinning the RIVKLE® plus blind rivet nut on and off, using the ratchet.

Description	Size	Art. no.	Price in €
Basic tool RIVKLE® M2007	M 5 – M 12	2353 020 1000	on request
Mandrel	M 5	2353 020 5020	on request
Mandrel	M 6	2353 020 6020	on request
Mandrel	M 8	2353 020 8020	on request
Mandrel	M 10	2353 021 0020	on request
Mandrel	M 12	2353 021 2020	on request
Nozzle	M 5	2353 020 5030	on request
Nozzle	M 6	2353 020 6030	on request
Nozzle	M 8	2353 020 8030	on request
Nozzle	M 10	2353 021 0030	on request
Nozzle	M 12	2353 021 2030	on request


RIVKLE® ZH 510 manual rivet setting tool

Contents:

Tool without mandrel and nozzle

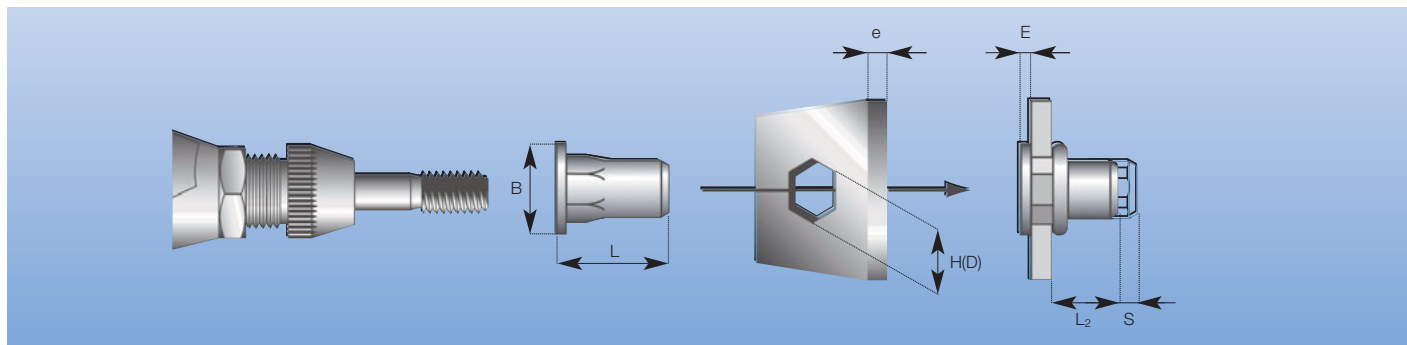
Method of operation:

Spinning the RIVKLE® plus blind rivet nut on and off, using a drill spindle. Rivet compression by optimum leverage. Handy quick adjustment of the stroke.


Description	Size	Art. no.	Price in €
Basic tool RIVKLE® ZH 510	–	2351 030 0000/10	on request
Mandrel	M 5	2351 030 5020/10	on request
Mandrel	M 6	2351 030 6020/10	on request
Mandrel	M 8	2351 030 8020/10	on request
Mandrel	M 10*	2351 031 0020/10	on request
Nozzle	M 5	2351 030 5030/10	on request
Nozzle	M 6	2351 030 6030/10	on request
Nozzle	M 8	2351 030 8030/10	on request
Nozzle	M 10*	2351 030 1030/10	on request

*only aluminium


RIVKLE® plus blind rivet nuts: Technical data




Flat head, steel

Shape	Thread, d	Thickness e	Insertion hole (D) Tol. $+0,1/0$	B	Upstand after setting the rivet E	Setting stroke S	Overall length L	Blind-side upstand after compression L ₂	Art. no.
	M 4	0.5 – 3.0	6	9	1.0	S = 4.5-e	11.3	5.8	2330 704 0230/51
	M 5	0.5 – 3.0	7	10	1.0	S = 4.7-e	13.0	7.3	2330 705 0230/51
	M 6	0.5 – 3.0	9	13	1.5	S = 5.0-e	14.5	8.0	2330 706 0230/51
	M 8	0.5 – 3.0	11	16	1.5	S = 5.5-e	18.0	11.0	2330 708 0230/01
	M 10	0.7 – 3.5	13	19	2.0	S = 6.1-e	22.0	13.9	2330 710 0235/01


Flat head, stainless steel

Shape	Thread, d	Thickness e	Insertion hole (D) Tol. $+0,1/0$	B	Upstand after setting the rivet E	Setting stroke S	Overall length L	Blind-side upstand after compression L ₂	Art. no.
	M 4	0.7 – 3.0	6	8	1.0	S = 4.0-e	12.0	7.0	2330 604 0230/01
	M 5	0.7 – 3.3	7	9	1.0	S = 5.3-e	12.7	7.2	2330 605 0233/01
	M 6	0.7 – 3.3	9	12	1.5	S = 5.7-e	15.2	8.6	2330 606 0233/01
	M 8	0.7 – 3.3	11	14	1.5	S = 6.5-e	16.9	9.5	2330 608 0233/01

Extra small countersunk head, steel

Shape	Thread, d	Thickness e	Insertion hole (D) Tol. $+0,1/0$	B	Upstand after setting the rivet E	Setting stroke S	Overall length L	Blind-side upstand after compression L ₂	Art. no.
	M 3	0.5 – 2.0	5	5.7	0.3	S = 3.6-e	9.0	5.5	3436 703 0020/01
	M 4	0.5 – 3.0	6	6.7	0.3	S = 4.9-e	11.0	5.8	3436 704 0230/51
	M 5	0.5 – 3.0	7	8.0	0.3	S = 5.3-e	13.0	7.4	3436 705 0230/51
	M 6	0.5 – 3.0	9	10.0	0.4	S = 5.1-e	14.0	8.5	3436 706 0230/51
	M 8	0.5 – 3.0	11	12.0	0.4	S = 6.0-e	17.5	11.1	3436 708 0230/51
	M 10	0.7 – 3.5	13	14.0	0.5	S = 6.5-e	21.0	14.0	3436 710 0235/01

Extra small countersunk head, stainless steel

Shape	Thread, d	Thickness e	Insertion hole (D) Tol. $+0,1/0$	B	Upstand after setting the rivet E	Setting stroke S	Overall length L	Blind-side upstand after compression L ₂	Art. no.
	M 4	0.7 – 3.0	6	7	0.5	S = 4.0-e	11.6	7.0	3436 604 0230/01
	M 5	0.7 – 3.3	7	8	0.5	S = 5.3-e	12.3	7.2	3436 605 0233/01
	M 6	0.7 – 3.3	9	10	0.6	S = 5.7-e	14.5	8.6	3436 606 0233/01
	M 8	0.7 – 3.3	11	12	0.6	S = 6.5-e	16.1	9.5	3436 608 0233/01

Böllhoff International with companies in:

Argentina
Austria
Brazil
Canada
China
Czech Republic
France
Germany
Hungary
India
Italy
Japan
Mexico
Poland
Romania
Russia
Slovakia
Spain
Turkey
United Kingdom
USA

Apart from these 21 countries, Böllhoff supports its international customers in other important industrial markets in close partnership with agents and dealers.



Made of paper certified with the Ecolab of the European Community (Reg No. FR/11/003).
Printed by FSC®-certified company GFA-COC-001790.

Subject to technical change.
Reprinting, even in extract form, only permitted with express consent.
Observe protective note according to DIN 34.

Böllhoff Group
Please find your local contact on www.boellhoff.com
or contact us under fasteningtechnology@boellhoff.com

